



## New Millstones for Letheringsett Mill

### New Millstones Delivery due mid April

At last, the long awaited additional set of millstones should be delivered to the mill on 15th April. The new millstones are made of a self-sharpening manmade composite. This will increase Letheringsett's flour production capacity by 50%. The millstones have been specially made for Letheringsett mill by a specialist company based in Holland. But it was the prize money from a competition that made the purchase possible.

Mike Thurlow won the UK TV Food Awards 2006 competition, with Gary Rhodes as one of the judges, Mike beat contestants from all over the UK with his spelt flour scones made from spelt flour milled at Letheringsett. On winning the contest, Mike said:

*"Winning the regional finals would've been enough, but going onto win the nationals was just amazing.*

*Business-wise, orders have gone mad and I've been able to take on a new member of staff, on top of buying a new truck.*

*"There's never been any money to advertise, but since getting through the first heat we've been in the regional and national papers, on the BBC's Great British Menu, and I've even been invited to meet Prince Charles at a farm shop I supply.*

*With the prize money we've ordered two mill stones from Holland, which cost something close to £15,000. We've done a lot of desperately needed repair work and bought a top of the range computer for the office"*

Letheringsett watermill was originally built to house and work four sets of millstones all run from the power produced from the River Glaven.

### Two sets of Millstones

At present, the one working pair of Derbyshire grit millstones are 150 years old. They are a man-made composite, a mixture of plaster of Paris and millstone grit, kiln fired to make them very extremely hard.

There is a second set of stones at Letheringsett, a set of French burr stones. They have been used but are a bit quirky, more flour comes up through the eye of the stones than ends up in the flour shute and it's not known why! And no – it's not French burrs stones used to make flour for French bread. A millwright is going to look at them soon!



*Existing Millstones at Letheringsett.  
Left. The 'quirky' set of French Burr stones.  
Right. The working set of Derbyshire grit stones.*

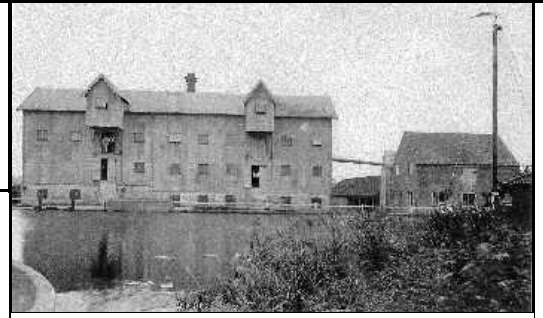
**All FLM memberships expire  
30th April  
Please renew promptly  
See page 4**

**Members are welcome to come and watch  
the delivery & unloading of the new millstones.**

*Please check directly with the mill to confirm the date and approximate time*

# Norfolk Watermills

## Briggate Mill



**Briggate Watermill c 1912**  
photo courtesy of Norfolk Mills

Briggate, a sleepy Norfolk village in the parish of Worstead had its first mention of a watermill on its present site at least 700 – 800 years ago according to a North Walsham Historian

### **Briggate as a Working Mill.**

Originally used to grind, locally grown grain, owned by Cubbitt & Walker since 1883, Briggate was a busy mill with up to 12 employees. The millstones were originally driven by a 14 ft diameter, breastshot waterwheel. It's location on the North Walsham & Dilham canal, which opened in 1826, enabled much of the grain to be delivered by wherries from Gt Yarmouth docks. It would be unloaded directly to the mill building via a lucum, specially constructed over the water for that purpose. A steam roller mill was installed in 1890 to increase the milling capacity. In 1903 the granary was converted to a gristmill. The waterwheel was removed around 1943. Animal feed grinding and mixing, kept the mill busy and profitable until 1969 when all operations at Briggate ceased and were transferred to Ebridge mill.

### **Briggate in the Headlines**

Briggate watermill worked up till 1969 with a relatively uneventful history apart from a couple fires, one in 1870 destroying the watermill and another in 1890 destroying a small granary. In 1918 a German bomb shook the mill so badly the steam chimney was put out of true. Ironically, since its closure, the mill has been the centre of controversy and newspaper headlines on several occasions.

### **Fire destroys the Granary**

In January 1975, Briggate Mill was sold to Mr. Michael Howard for £10,500 only for it to be destroyed by fire in the August. The most notorious headlines followed this serious fire concerning a conspiracy to defraud the Royal Insurance Company of £175,00. This case became known as The Briggate Mill Case, cost around £750,000, involved investigations by the Scotland Yard Serious Crimes Squad, conspiracy, arson, fraud and even had connections with the Kray twins and their elder brother Charlie.

However, the most recent headlines were in January this year 2008 and the dispute is still ongoing.

### **Briggate Mill Under Threat from New Village Resident**



**Granary from the road 1<sup>st</sup> Jan 07**  
Photo Anne Grand



**Site clearance in progress**  
5<sup>th</sup> Jan 08 Photo Mexeeena Carlos



**Fenced in by NNDC 21st Mar 08**  
Photo Anne Grand

During the summer of 2007, a new resident, one David Turner, moved into the village of Briggate, near Worstead, North Walsham in Norfolk to a property adjacent to the site of the old watermill and steam mill.

By November the villagers noticed the mill site had been securely fenced in and had allegedly been claimed by Mr Turner, as the true owner could not be found. On the weekend of the 5<sup>th</sup> January 2008 a 360 mechanical tracked excavator and skip were used to clear and level the site surrounding the mill buildings.

The villagers fear that Mr Turner is trying to land grab the site at Briggate mill and an area on the opposite side of the road that used to be the mill dam with a view to developing the site for profit.

The following weekend on the 11<sup>th</sup> January the fencing had been demolished and disappeared prior to an on-site meeting between North Norfolk MP Norman Lamb and concerned residents, on Sunday 13<sup>th</sup> January 2008.

Reports of the events and meeting were given coverage by local television, radio and Eastern Daily Press. North Norfolk District Council has since posted a notice of a planning application for the 'Continued siting of polytunnel' submitted by Mr Turner and Miss Bullimore and has made trees on the site subject to a provisional Tree Preservation Order for a period of six months. NNDC has erected a Harris security fence to protect and prevent entry to the site and the now dangerous building.

### **WARNING**

\*Persons required to keep weights and measures are:

(1) **Every miller or person keeping a mill for grinding corn.** Such a man must have in his mill a true and equal balance with proper weights according to standards. If he has not such balance on his mill he is liable to a penalty not exceeding twenty shillings.

**Cassell's Lawyer Vol. III 1903**

## Friends of Letheringsett Mill Christmas Meal



**The Earle Arms**

FLM's first Christmas Meal was held at the Earle Arms at Heydon in December.

Heydon is charming village, just off the B1149 Norwich to Holt Road. It is an estate that has been owned by the Bulwer Long family, who still live there, since 1640. It is one of only 12 privately owned villages in Britain.

A warm welcome greeted us at the Earle Arms. A pre-meal drink in the bar and introductions started the social side of the evening. An excellent festive meal offering a choice of traditional roast turkey, sea bass with herbs, roast Heydon partridge, steak au poivre or wild mushroom risotto, was enjoyed by members. Delicious deserts followed. Crackers, a log fire, good conversation and plenty of wine all added to the atmosphere.

It was a wonderful place to celebrate our first Christmas.

### **Friends of Letheringsett Mill Volunteers**

*Do you have a few hours to spare  
a week or in a month?*

Letheringsett Mill is looking for volunteers to assist in various ways with the mill's tourism and educational role.

#### **Volunteer Guides and Trainee Millers**

Mike is specifically looking for enthusiastic, outgoing people to train as volunteer guides and trainee millers to assist with the groups of public and school parties visiting the mill.

Please contact Mike at the Mill to discuss this exciting opportunity Tel: 01262 713153

#### **Volunteer Gardeners**

The gardens at Letheringsett are always in need of attention. If you have a few hours free and are able to help with general garden maintenance, weed, cut back shrubs, sweep leaves, cut grass or similar tasks, your help would be much appreciated. Occasional or regular help. Equipment provided. Hours to suit.

#### **Volunteer Refreshments**

Offering tea & biscuits for sale to summer visitors to the mill is a great way to boost funds for FLM. Afternoons 1.30 - 3.30 Tuesdays to Friday. If enough people are interested it'd be great to have a rota and cover all the days, if not days to suit!

Volunteering can be fun and a great way to meet people and become more involved with the mill at Letheringsett. Interested in more details?

Please telephone

**Anne Grand: 01603 754623**



## **FLM Events 2008 Dates for your Diary**

### **Saturday 10<sup>th</sup> May National Mills Weekend**

Letheringsett Mill will be open, 10.00 – 12.30 with working demonstrations as usual.

Flour & bread on sale

Free admission with your FLM membership card

### **Sunday 11<sup>th</sup> May National Mills Weekend Mill Tour**

A full day tour of local mills, to include at least two mills, Hopefully, including Burgh watermill on the River Bure, photo stops for other mills en-route, maybe a Riverside walk, and definitely a pub lunch!

Watch Friends of Letheringsett website for final details.

Booking will be required.

### **Sunday 29<sup>th</sup> June Friends of Letheringsett Mill Annual General Meeting & River Glaven Walk**

The first Friends Of Letheringsett Mill A.G.M. is to be held at Letheringsett Mill at 1 pm.

A guided walk along the River Glaven led by Ian Sheppard of the River Glaven Conservation Group will follow the meeting. Learn about the river, it's wildlife, habitats and river management.

Tea and scones will be served at the mill.

Please try and attend, it'll be good to meet you all.

### **Friday 18<sup>th</sup> July Cheese & Wine by the River Glaven**

This event, hosted by Friends of Letheringsett Mill will hopefully be one of many involving all the different mill groups in Norfolk and their members meeting and socialising together.

Enjoy a summer evening beside the River Glaven at Letheringsett Mill with fine cheese and wines included.

The mill will open to view. Please bring a raffle prize.

Tickets £10 in advance. 7 pm till late

### **Saturday 16<sup>th</sup> August Summer Barbeque at Morse's Windpump Park**

Friends of Morse's Windpump Park, based at Repps with Bastwick in the heart of the Broads are return hosts holding a summer barbeque to which all FLM members are invited. More details to follow.

### **Saturday 6<sup>th</sup> September Letheringsett Barbeque**

Mike & Marion Thurlow will host their annual BBQ on the riverside lawns of the mill. More details to follow.

For further information on any of the events, please check the website:

[www.letheringsettmillfriends.co.uk](http://www.letheringsettmillfriends.co.uk)

Or contact: Anne Grand

**Telephone: 01603 754623**

**Email: [info@letheringsettmill.co.uk](mailto:info@letheringsettmill.co.uk)**

## Friends of Letheringsett Mill Gift Membership

If you've enjoyed your membership, why not purchase a Membership to Friends of Letheringsett Mill as an unusual gift for friends or family. A gift that lasts for the whole year!

Pay the usual annual membership.  
Individual £10, Joint £15, Family £20  
The membership will be valid from 1st May 2008 expiring in April 2009!

Don't forget! All the usual benefits - free admission to the mill, newsletters and the opportunity to become involved with the mill in practical projects, taking part in events and fundraising.

## Friends of Letheringsett Mill A Milling session

A one to one milling session with Mike!

Mill your own bag of flour to take home. Approximately an hour and a half of expert practical tuition in starting and operating the mill, mill stones, filling the grain hoppers all under the guidance of Mike to produce your very own bag of flour.

All this for only £25 with the proceeds going to Friends of Letheringsett Mill.

A voucher will be provided for you to give to as a gift if required. This allows the recipient to arrange a mutually convenient date and time.

To purchase a gift membership,  
a milling session voucher,  
or just for more details,  
Please telephone:  
**Anne Grand 01603 754623**



### Friends of Letheringsett Mill

#### CONTACT DETAILS

Anne Grand  
Newsletter Co-coordinator/Secretary  
24 Taverham Road Felthorpe  
Norwich NR10 4DR

Phone: 01603 754623

Website: [www.letheringsettmillfriends.co.uk](http://www.letheringsettmillfriends.co.uk)  
Email: [info@letheringsettmillfriends.co.uk](mailto:info@letheringsettmillfriends.co.uk)

**Letheringsett Watermill**  
Riverside Road, Letheringsett, Holt, NR25 7YD

For Mill opening times etc  
Telephone : 01263 713153  
Website: [www.letheringsettwatermill.co.uk](http://www.letheringsettwatermill.co.uk)



## FLM Members News

The FLM committee has been and still is busy organising various events for the forthcoming year. With more events than last year, more varied events than last year and this year we will be joining with other local mill groups for some joint events. More opportunities to meet other people interested in mills in Norfolk. The first one being a cheese and wine evening in July hosted by Friends of Letheringsett with a return invite from Morse's windpump park for a barbeque in August. Deciding on events and activities for the group is sometimes quite difficult so if you have any ideas of things you'd like to see, share, learn about, do or take part in, please let us know, it's your group!

As we approach the end of our first year, I'd like to remind you that membership renewals are due at the end of April. We hope you have enjoyed the benefits of your membership in the past year, visited the mill and maybe managed to get to some of the events. We would like to thank you for your support in the past year and hope that you renew and enjoy your membership with us again in 2008. We look forward to see you at the mill or at some of the events we've been planning.

Our thoughts are also turning to holding our first Annual General Meeting in June. We have all enjoyed this first year of the group. It's been hard work but rewarding but we are looking for people who are willing to join us and share the load. So if you are enthusiastic, hard-working with plenty of ideas and would like to see FLM grow and support Letheringsett mill, please consider standing for the FLM Committee. More details in the next issue.

Anne

### Friends of Letheringsett Mill

#### Membership Renewal Reminder

All FLM memberships expire  
on 30th April 2008.

Individual membership £10,  
Joint membership £15,  
Family membership £20

Please send a cheque made payable to 'Friends of Letheringsett Mill'  
To: Bridget Neville, Treasurer & Membership Secretary  
Mossymere House, Itteringham, Norwich. NR11 7BD

to renew your membership and receive your new membership card  
as soon as possible and to help us keep costs down. Thank you.



### Friends of Norfolk Mills

There have been many positive changes recently within Norfolk Mills Group. Under the enthusiastic Leadership of Phil Baker and Debra Nicholson they have reformed and renamed the group Friends of Norfolk mills and together with their committee behind them, have plans to take the group forward. The committee and members of Friends of Letheringsett mill are pleased to see that the proposed changes to the former Norfolk mills group have been formally accepted and starting to take effect. Friends of Norfolk Mills marks the start of a new era for the care of windmills and watermills and drainage pumps in Norfolk with positive change and renewed enthusiasm.